



Atelectasis and collapse

Collapse involving the left lung lobes

What will I gain from this video?

At the end of the video, you will be able to identify LUL and LLL collapse.

Radiological signs of lobar collapse

Direct: shift of the fissures

Radiological signs of lobar collapse

Indirect:

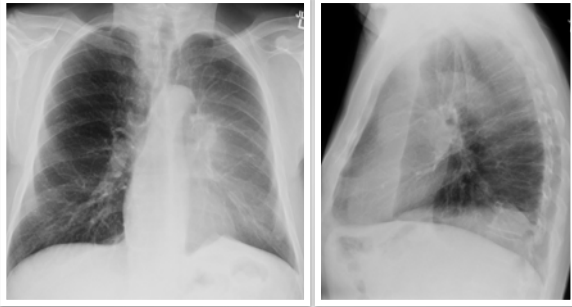
- Increased lung opacity
- Compensatory hyperinflation
- Hilar shift
- Mediastinal shift
- Elevated diaphragm
- Crowding of the ribs
- Crowding of pulmonary vessels
- Obscured borders

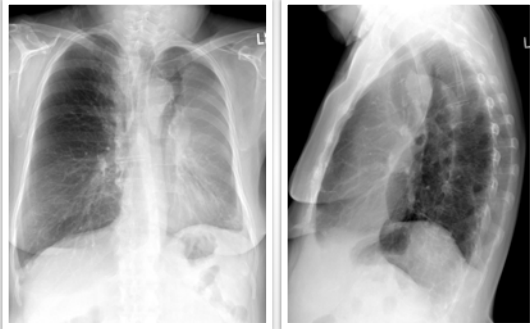
LUL—direction of collapse PA



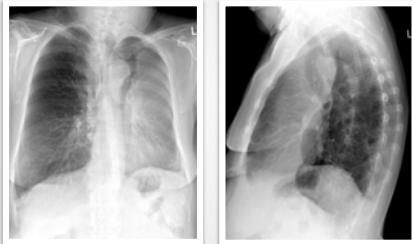
LUL—direction of collapse PA







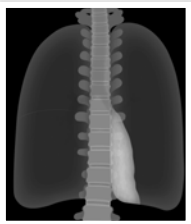
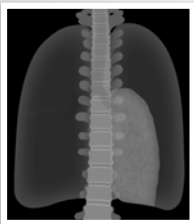
Luftsichel sign



LLL—direction
of collapse PA



LLL—direction
of collapse PA





Collapse can involve the LUL or the LLL

Look for displacement of the fissures

The lateral is important

Chronic collapse can be difficult to identify
